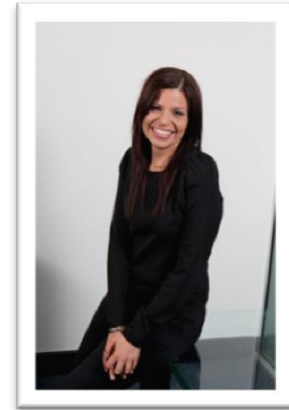


### IN A SNAPSHOT

Hannah has over 8 years' experience in consulting and human resources management and has provided performance solutions to some of Australia's largest collaborative capital projects, and High Performing Organisations. Hannah is passionate about working with teams to develop value-adding solutions that meet their specific needs and support long term success. Hannah's engaging style enables her to develop a quick rapport with each team to reach and exceed their performance goals. Hannah likes to challenge team members to continually review and assess their own behaviours and to "raise the bar" with regard to their own and their teams performance.



Hannah has had a range of business experience across various industries including construction, minerals, hospitality, manufacturing, services and retail. She has worked with a number of landmark Capital Alliance Projects from award to completion, and is creative in finding unique ways to support each team deliver outstanding results. Hannah's mature and professional approach allows her to develop strong working relationships and to coach teams towards their highest potential and level of performance.

### EDUCATION AND QUALIFICATIONS

- Bachelor of Commerce (major in Human Resource Management)
- Member Australian Human Resources Institute (MAHRI)
- Six Seconds Emotional Intelligence Associate
- Certified Workplace Rehabilitation Coordinator (QLD)

### EXPERTISE

Hannah has a unique ability to apply the foundations of human behaviour and the principles of good human resources practice to implement a range of creative and high impact services.

These include:

- Alliance / project facilitation, coaching and advice;
- One-on-one coaching and skill development;
- Facilitation of workshops and meetings;
- Team building workshops and events;
- Leadership and management team development;
- Design and implementation of diagnostic tools and climate surveys;
- Strategic planning;

- Proposal and bid coaching;
- Organisational change and development;
- Team development and coaching;
- HR and IR training programs;
- Conflict resolution processes;
- Design and implementation of Alliance Culture strategies

### SUMMARY OF RELEVANT EXPERIENCE

Hannah's experience has derived from her ability to effectively lead teams of people through innovative and engaging workshops and interventions. She is articulate, inspirational and yet real with teams; creating a platform for teams to develop their own capability and discover their own potential. Hannah is a skilled facilitator, and is well known for her leadership program delivery.

In her coaching approach, Hannah works with individuals in a warm and comforting, yet confronting style. Her ability to focus on developing people in their role enables individuals to reach their aspirations. She is also trusted to help individuals confront the 'unspeakable' elements that are preventing an individual to achieve their goals.

Alliance and Project Team Development as a discipline and effective management tool within the Infrastructure industry has gained momentum over the last decade due to its proven track record.

Hannah has provided long-term facilitation and support services to a number of these, particularly throughout QLD. These have included:

- CoalConnect
- Southern Queensland ARRPs Alliance
- PacificLink Alliance
- Southern Regional Water Pipeline Alliance
- Origin Alliance